



MARK MAKING in silhouette, palette, pure and cascade

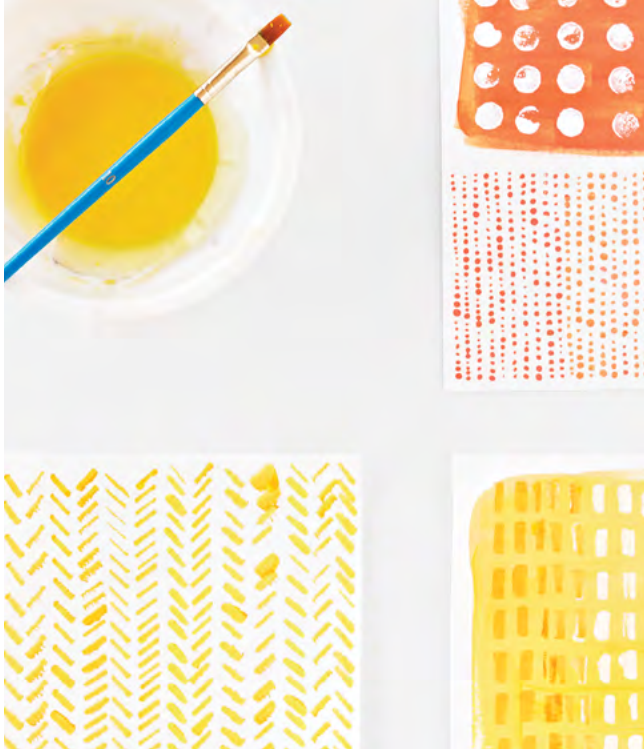
Mark Making |



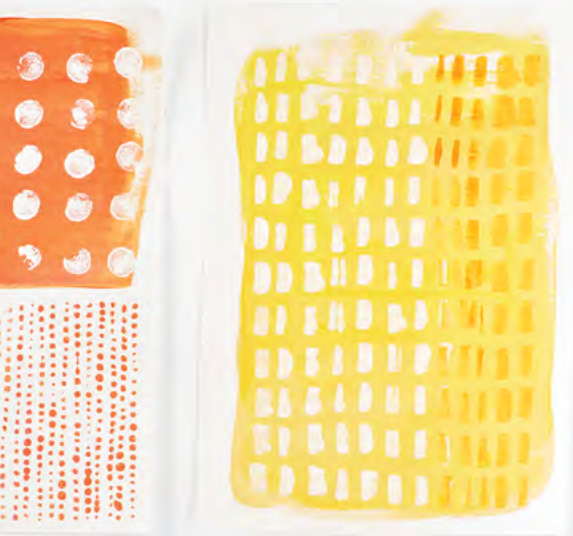


MARK MAKING in palette and cascade





MARK MAKING in silhouette



Dot and dash. Shape and shade. Our design team explored the art of mark making—a graphic technique of sketch. Hatches and dabs cluster together to create pattern and tonal texture.

—



MARK MAKING in pure, bliss and daylily
with PRESSED in mist / PERENNIAL & FLORACULTURE in marigold



COLORWAYS 1509V



00150 almond



00200 daylily



00250 bliss



00300 succulent



00350 aloe



00370 cascade



00400 watercolor



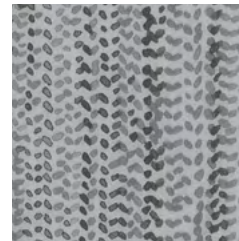
00450 indigo



00500 pure



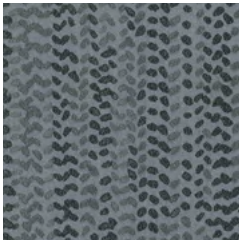
00520 palette



00540 pointillism



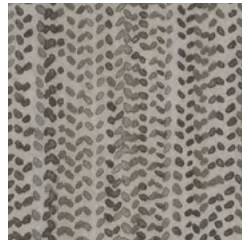
00560 quill



00580 silhouette



00650 koi



00700 loam



00750 earthwood



00900 boysenberry

PRODUCT SPECIFICATIONS

MARK MAKING | resilient plank

style / I509V

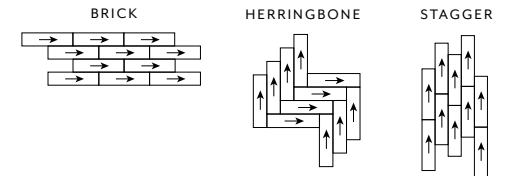
product size	5.96" x 48" 15.13 cm x 121.92 cm
construction	LVT
total thickness	.197" 5mm
wear layer	.020" 20mil (0.5mm)
finish	ExoGuard™
installation	glue down

MARK MAKING 2.5 | resilient plank

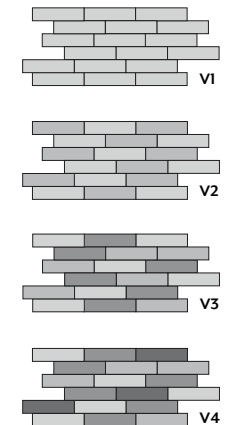
style / I692V

product size	5.96" x 48" 15.13 cm x 121.92 cm
construction	LVT
total thickness	.098" 2.5mm
wear layer	.020" 20mil (0.5mm)
finish	ExoGuard™
installation	glue down

INSTALLATION METHODS



COLOR VARIATIONS



Shade and texture can vary slightly or significantly from piece to piece within a color. V1 shade variation has little or no change from piece to piece where a V4 will have a large variety of color and/or texture changes. **All colors in Mark Making are a V2.**

MARK MAKING in bliss, cascade, pure, palette and silhouette

/ installation in herringbone

For full specifications and color, please [visit this product on the website.](#)